

1

2

3

4

A

B

C

D

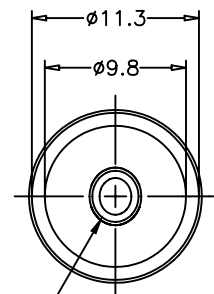
A

B

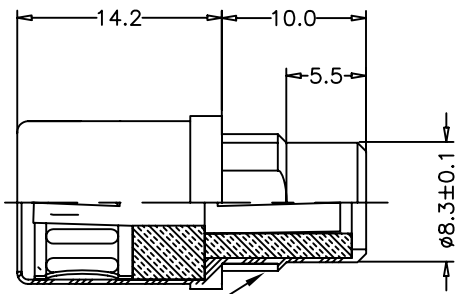
C

D

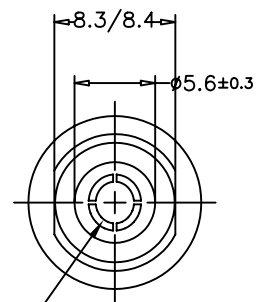
NOTE : THE APPEARANCE AND CHARACTERISTIC REQUESTED TO SPECIFICATION.



MUST ACCEPT 2.35 DIA. PIN.



3/8-32 UNEF-2A



MUST ACCEPT 3.175 DIA. PIN.

\* COMPARABLE WITH :

PARTS LIST				
ITEM	PARTS NAME	PARTS NO.	MATERIAL	FINISH
1	SHIELD CASE	F-186C-04	C.R.STEEL	Ni
2	INSULATOR BUSHING	J-015B-410	NYLON66	-
3	CENTER CONTACT	P-032B-06	BRASS	Ni
4	INSULATOR WASHER	P-017C	NYLON66	-
5	CONTACT SPRING SHACKLE	P-013D	PHOSPHOR BRONZE	Ni

REV	DESCRIPTION	DRWN	DATE	UNIT <i>mm</i>	GENERAL DIMENSION TOLERANCE	TITLE						REVISION STATUS OF SHEETS	
				MATERIAL	NUM ± 0.3    ANG ±	ADAPTOR (RCA JACK TO IEC FEMALE SOCKET)						ISSUE	SHEETS
				UNLESS OTHERWISE SPECIFIED TOLERANCE				CONNECT-TECH PRODUCTS CORP.					
				3RD ANGLE	SCALE	DSGD	DRWN	CHKD	APPD	DATE	CTP-186C-04D		
						黄福堂	黄福堂	曾其勇	曾其勇	12.06.1996			

1

2

3

4