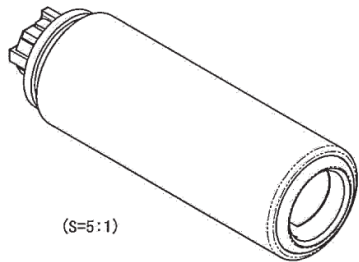
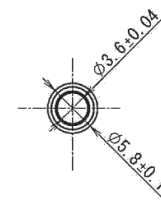
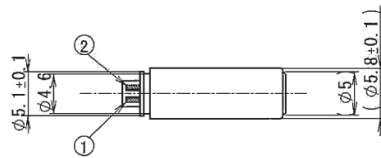
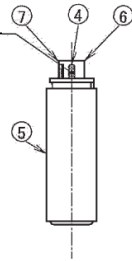


CTP-J-3504-4C

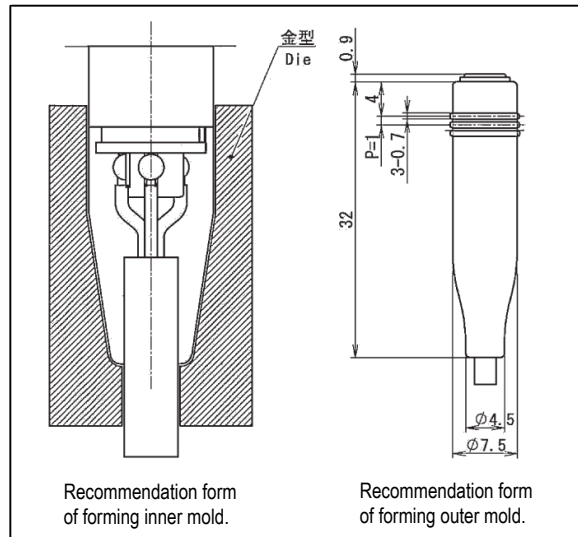
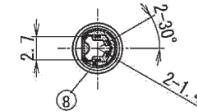
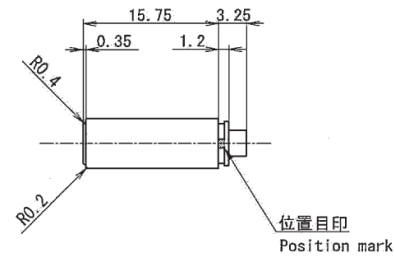


The cross-hatching section is taken as the solder grounding possible range. The quantity of bond coating of solder grounding possible range refer to boundary sample.

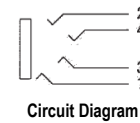
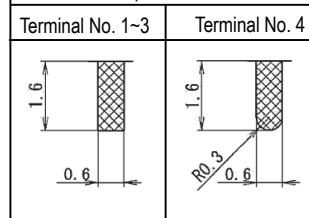


SPECIAL REMARKS:

1. The performance should follow the standards specified in the appended sheets.
2. Unspecified tolerance of dimension shall be $\pm 0.2\text{mm}$.
3. Recommended plug is a diameter 3.5 4-position mini size concentric plug.
4. During the process for the insertion of a plug, a contact shall not be specifically provided.
5. This product uses the nylon resin. Please don't leave it with packing bag opened.
6. No zone depleting substances are used in the manufacturing process of this product.
7. The bond shall be coated on a rear part in slanted area. However, it shall be regarded to be accepted even if bond adhesion is recognized on other than specified area in the drawing, provided that such adhesion is not harmful for use.



Detail of tip of terminal foot.



RoHS COMPLIANT
EU Directive 2002/95/EC

No.	PART NAME	QTY	MATERIAL (THICK, COLOR)	REMARK
8	BOND	1	EPOXY ADHESIVE (ONE-COMPONENT)	BLACK
7	BODY B	1	PA UL94HB	BLACK
6	BODY A	1	PA UL94HB	BLACK
5	COVER	1	PBT UL94HB	BLACK
4	RESILIENT TERMINAL T	1	C1720R t = 0.2	AU PLATED
3	RESILIENT TERMINAL R	1	C5210R t = 0.2	AU PLATED
2	TERMINAL B	1	C5210R t = 0.2	AU PLATED
1	TERMINAL A	1	C5210R t = 0.2	AU PLATED



Phone 1-800-809-2751

Fax 1-510-440-0579

www.connect-tech-products.com • info@connect-tech-products.com

4428 Technology Drive • Fremont, CA 94538, USA • 510-498-8815 • Fax: 510-440-0579