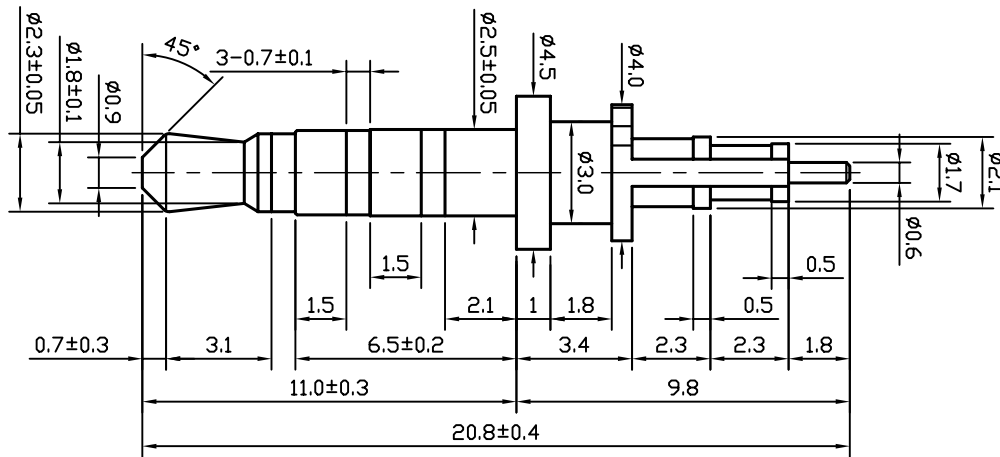
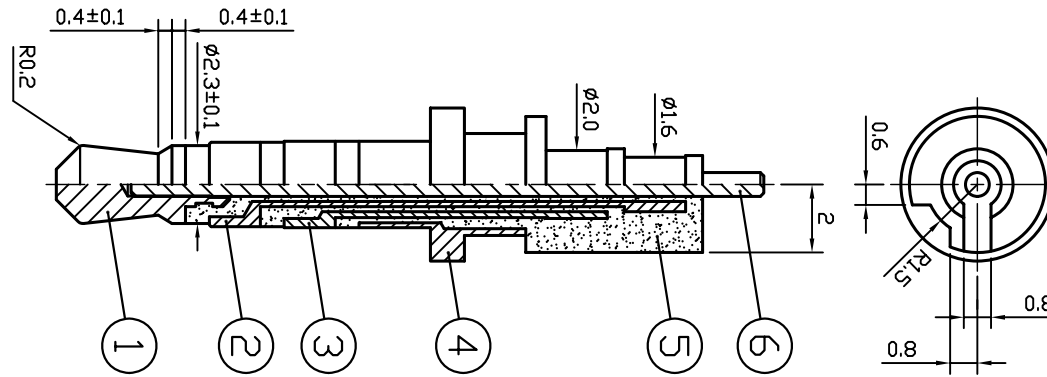


CTP-P-2504-04-NI



- 1.SURFACE PLATING:NI/Au PLATED
- 2.Dielectric strength:AC250V.
- 3.Insulation resistance:100MΩ or over.(DC500V)
- 4.Contact resistance: 30mΩ or less.

6	410-004	PIN	SUS	1
5		DIELECTRIC	POM	
4	414-049	SLEEVE	BRASS	1
3	412-057	SLEEVE	BRASS	1
2	472-001	SLEEVE	BRASS	1
1	412-084	TIP	BRASS	1
ITEM	DRAWING NUMBER	PART NAME	MATERIAL	Q'TY



Phone 1-800-809-2751

Fax 1-510-440-0579

www.connect-tech-products.com • info@connect-tech-products.com

4428 Technology Drive • Fremont, CA 94538, USA • 510-498-8815 • Fax: 510-440-0579