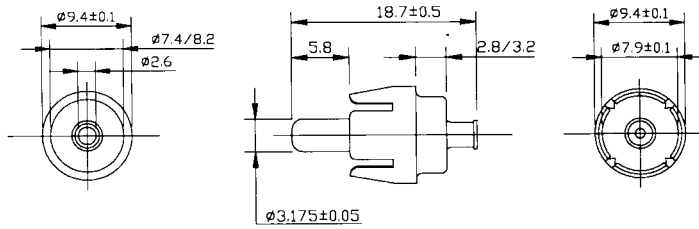


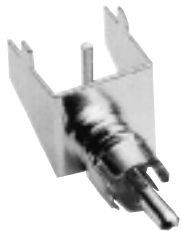
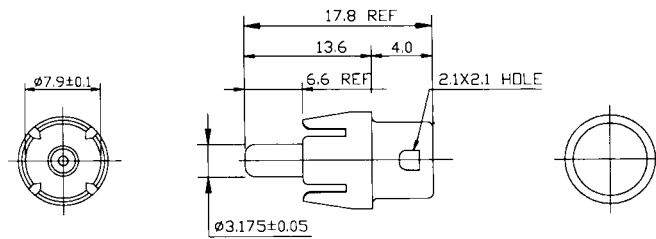
Phono: Straight, Right Angle, Solder, Printed Circuit Board, Crimp Plugs



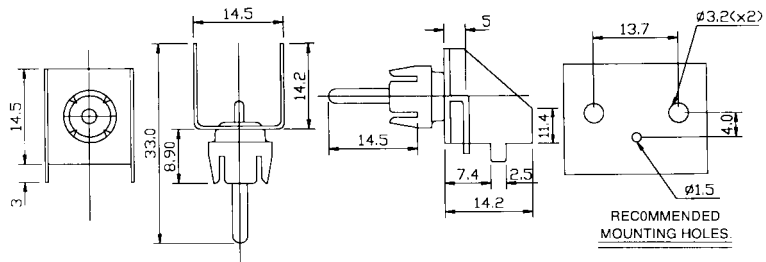
CTP-039C-1
STRAIGHT SOLDER PHONO PLUG



CTP-160C-2
RIGHT ANGLE SOLDER PHONO PLUG



CTP-016M
RIGHT ANGLE PCB MOUNT PHONO PLUG



CTP-089E
RIGHT ANGLE CRIMP PHONO PLUG

